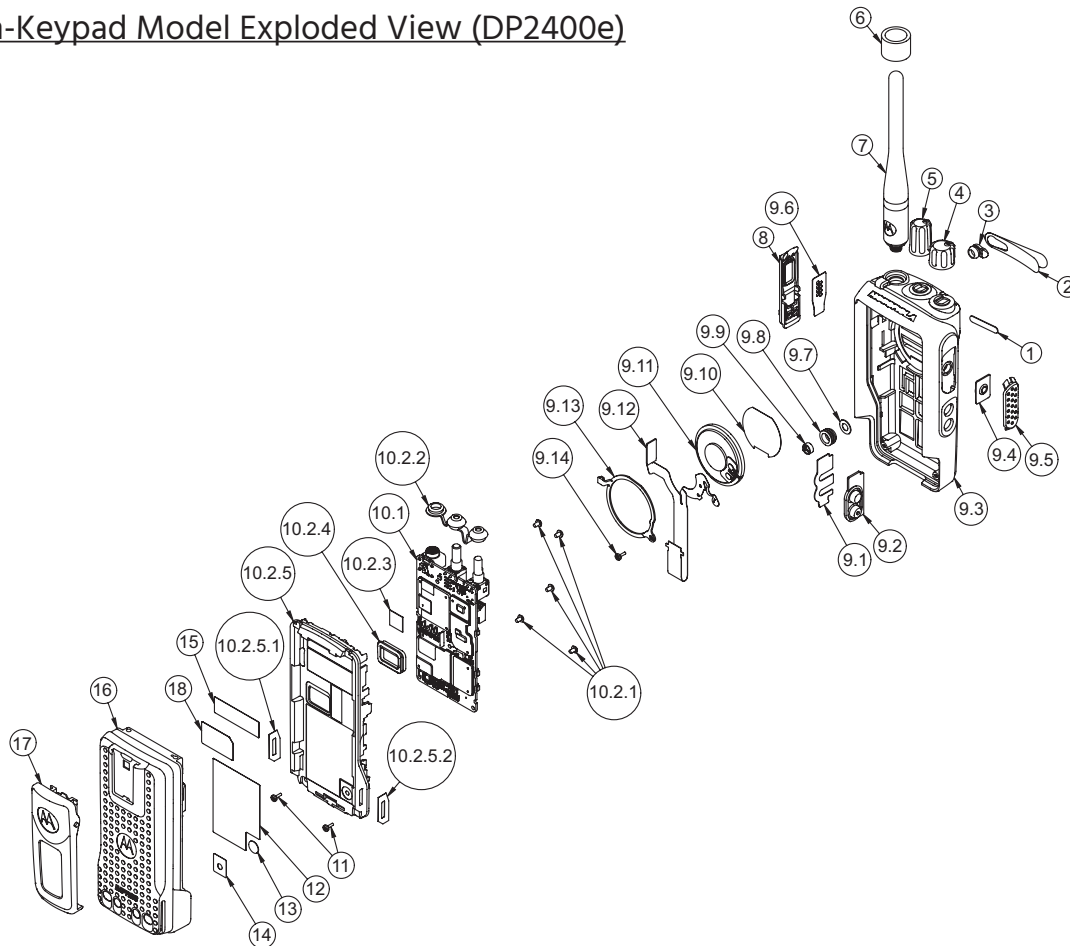


## DP2400e and DP2600e Exploded Mechanical View and Parts List

### Non-Keypad Model Exploded View (DP2400e)



Item	Description	Part Number
1	Nameplate (Product Number)	Refer to Additional Parts List
2	Nameplate (Motorola Solutions)	33012026001
3	RF Plug	38012018001
4	Volume Knob	36012016001
5	Channel Knob	36012017001
6	Antenna ID Band	Refer to Additional Parts List
7	Antenna	Refer to Additional Part List
8	Aesthetic Cover	0104058J40
9	Front Cover Kit	PMLN7272_
9.1	PTT Retainer	42012035001

Issue Date: 26/07/21

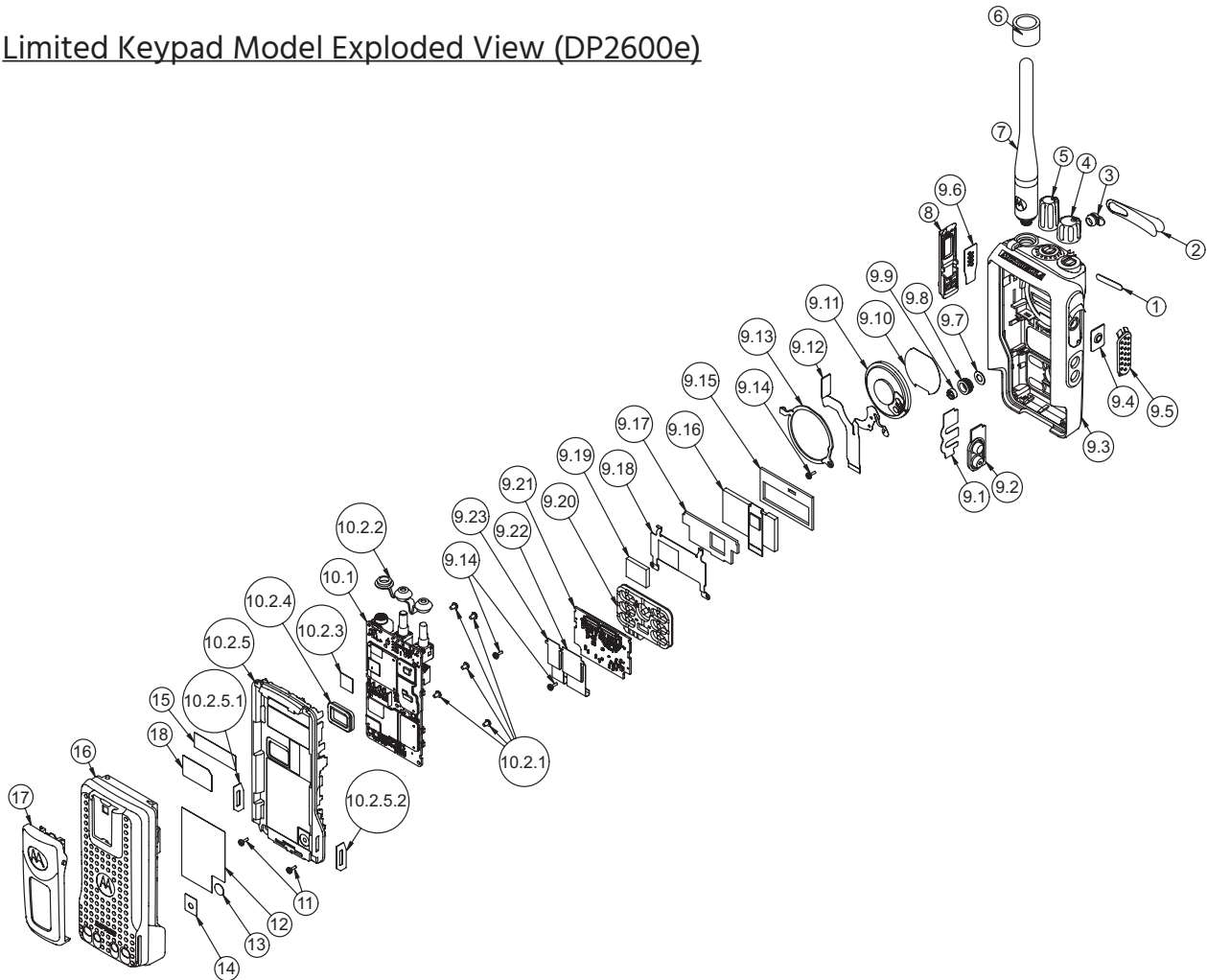
## DP2400e Parts List Cont.

Item		Description	Part Number	
	9.2	Side Button	KP000087A01	
	9.3	Housing Assembly	0104067J10	
	9.4	PTT Keypad	KP000086A01	
	9.5	PTT Paddle	HN000696A01	
	9.6	UC Escutcheon	33012020001	
	9.7	Microphone Membrane	SL000209A01	
	9.8	Microphone Boot	SL000208A01	
	9.9	Microphone	50012012001	
	9.10	Speaker Mesh	HW000738A01	
	9.11	Speaker	AC000028A02	
	9.12	UC-Audio Flex	PF001006A01	
	9.13	Speaker Retainer	42012044001	
	9.14	K18 Screw (Keypad-Display Retainer and Speaker Retainer)	0385273D06	
10		Back Kit	Refer to Additional Parts List	
	10.1	Main Board Assembly	Part of Back Kit	
	10.2	Chassis Assembly	PMLN7273_	
		10.2.1	M2 Screw (Main Board Assembly)	03012034001
		10.2.2	Top Control Seal	32012269001
		10.2.3	Thermal Pad	7515526H01
		10.2.4	Battery Contact Seal	32012110001
		10.2.5	Chassis (With dispensed O Ring)	0104067J11
		10.2.5.1	Chassis Left Label	LB000706A01
		10.2.5.2	Chassis Right Label	LB000706A02
11		Front Kit-Back Kit Screw	0316281H01	
12		Compro Label	LB000560A01	
13		Ventilation Seal	3286058L01	
14		Ventilation Label	LB000256A01	
15		TIA Label	Non-field replaceable	
16		Battery	Refer to Additional Parts List	
17		Belt Clip	Refer to Additional Parts List	
18		RTTE Label	5486749Z01	

Issue Date: 26/07/21

## DP2400e and DP2600e Exploded Mechanical View and Parts List

### Limited Keypad Model Exploded View (DP2600e)



Item	Description	Part Number
1	Nameplate (Product Number)	Refer to Additional Parts List
2	Nameplate (Motorola Solutions)	33012026001
3	RF Plug	38012018001
4	Volume Knob	36012016001
5	Channel Knob	36012017001
6	Antenna ID Band	Refer to Additional Parts List
7	Antenna	Refer to Additional Parts List

Issue Date: 26/07/21

## DP2600e Parts List Cont.

Item	Description	Part Number
8	Aesthetic Cover	0104058J40
9	Aesthetic Cover	0104058J40
9.1	PTT Retainer	42012035001
9.2	Side Button	KP000087A01
9.3	Housing Assembly	0104067J09
9.4	PTT Keypad	KP000086A01
9.5	PTT Paddle	HN000696A01
9.6	UC Escutcheon	33012020001
9.7	Microphone Membrane	SL000209A01
9.8	Microphone Boot	SL000208A01
9.9	Microphone	50012012001
9.10	Speaker Mesh	HW000738A01
9.11	Speaker	AC000028A02
9.12	UC-Audio Flex	PF001002A01
9.13	Speaker Retainer	42012044001
9.14	K18 Screw (Keypad-Display Retainer and Speaker Retainer)	0385273D06
9.15	Front Display Poron	75012078001
9.16	Display Module (2-Line Monochrome)	72012014002
9.17	Back Display Poron	HW000757A01
9.18	Display Retainer	42012034001
9.19	Conductive Pad	75012147001
9.20	Limited Keypad	75012080001
9.21	Keypad Board Assembly	0104065J98
9.22	Interface Keypad-Display Flex	PF001004A01
9.23	Interface UC-Audio Flex	PF001005A01

Issue Date: 26/07/21

## DP2600e Parts List Cont.

Item				Description	Part Number
10				Back Kit	Refer to Additional Parts List
	10.1			Main Board Assembly	Part of Back Kit
	10.2			Chassis Assembly	PMLN7273_
		10.2.1		M2 Screw (Main Board Assembly)	03012034001
		10.2.2		Top Control Seal	32012269001
		10.2.3		Thermal Pad	75012234001
		10.2.4		Battery Contact Seal	32012110001
		10.2.5		Chassis (With dispensed O Ring)	0104067J11
			10.2.5.1	Chassis Left Label	LB000706A01
			10.2.5.2	Chassis Right Label	LB000706A02
11				Front Kit-Back Kit Screw	0316281H01
12				Compro Label	LB000560A01
13				Ventilation Seal	3286058L01
14				Ventilation Label	LB000256A01
15				TIA Label	Non-field replaceable
16				Battery	Refer to Additional PartsList
17				Belt Clip	Refer to Additional PartsList
18				RTTE Label	5486749Z01

Issue Date: 26/07/21

## Additional Parts List

**Table 37: Nameplates**

Item	Part Number
DP 2400e	33012039027
DP 2600e	33012039028

**Table 38: Back Kits**

Item	Part number
Back Cover Kit, 136-174 MHz, 5 W, Limited Keypad Portable	PMLD4733_S
Back Cover Kit, 136-174 MHz, 5 W, Limited Keypad Portable	PMLD4734_S
Back Cover Kit, 136-174 MHz, 5 W, Non-Keypad Portable	PMLD4737_S
Back Cover Kit, 300-360 MHz, 4 W, Non-Keypad Portable	PLMLD4749 _
Back Cover Kit, 350-400 MHz, 4 W, Limited Keypad Portable	PMLD4755_S
Back Cover Kit, 350-400 MHz, 4 W, Limited Keypad Portable	PMLD4800_S
Back Cover Kit, 350-400 MHz, 4 W, Non-Keypad Portable	PMLD4799_S
Back Cover Kit, 300 MHz, Non-Keypad Portable	PMLD4646_S
Back Cover Kit, 403-527 MHz, 4 W, Limited Keypad Portable	PMLE5074_ S

**Table 39: Antenna ID Band (in pack of 10 pieces)**

Item	Part Number
Grey	32012144001
Yellow	32012144002
Green	32012144003
Blue	32012144004
Purple	32012144005

**Table 40: Belt Clips**

Item	Part Number
2 in. belt clip	PMLN4651_
2.5 in. belt clip	PMLN7008_

Issue Date: 26/07/21